

THE STONE BOOK



#1

06 CASE STUDIES

20 ANCIENT MARBLE

24 TIMELESS GRANITE

28 BRINGING EXOTICNESS TO YOUR HOUSE
GIVE THE STONE A BIT OF YOUR PERSONALITY

30 ART WITH STONE
GIVE A TOUCH OF LUXURY TO YOUR HOME

36 LSI STONE AR APP
TRY AT HOME THE STONE THAT YOU HAVE
ALWAYS WANTED

38 LSI STONE SUSTAINABILITY

40 STONE MAINTENANCE:
GENERAL STEPS + DO'S AND DONT'S

EDIT

I

Turning the Stone into Artwork...

In a highly competitive industry inserted in a market that craves innovation allied to sustainability, LSI Stone continues to challenge the barriers of the impossible, presenting disruptive solutions.

Following our mission of transforming stone of incomparable quality into artwork, without ever forgetting our essence, which opposes the brutality and robustness of stone to the beauty and sensitivity of art, we respond with determination to all challenges.

In this first edition of the LSI Stone Magazine, in addition to presenting the wide variety of limestones, marbles, and granites with which we have proven ourselves in the most varied projects worldwide, we introduce some of the most exclusive stones in the world, which allow the materialization of the exoticism of each personality in different pieces.

The consolidated know-how combined with the constant and continuous investment in technology and innovative solutions, allows LSI to confidently present luxury design and architecture solutions that combine exoticism, exclusivity, and art in each piece, without ever forgetting sustainability as a determinant axis of all our activities.

Using the latest augmented reality technology, we launched the LSI Stone AR App, a unique and unprecedented tool in Portugal, dedicated to the personalization of the consumer experience, emphasizing its undoubtedly central role for us.

In this new chapter, there are no limits to our dreams!
A big step in the construction of our dreams!

O

#1

N



Chairwoman LSI Stone



DISCOVER



NEW APP

CASE STUDIES

06

80 FEN CHURCH STREET



80 Fenchurch Street



80 Fenchurch Street is a building located in the city of London. This huge project was conceived as a refreshing alternative to the more traditional towers in the city and counts with 24,000m² of office and residential space.

This 14-level office building is a revolution in the concept of London's real estate experience, which has been designed to serve a range of floorplates from around 460m² to 1900m².

This project was designed by TP Bennett Architects and developed by the main contractor Skanska. Focchi is responsible for the application of the exterior facades. The building's elevations are made with a refined Portuguese Limestone cladding supplied by LSI Stone. This natural material is used in a contemporary aesthetic provides the building with characteristics that differ from others.



80 Fenchurch Street

The facade application is done through a unique curtain wall system developed by Focchi and manufactured by LSI Stone, which reduces the application time considerably. In contrast to the traditional facade application, with this process, it takes approximately 20 minutes to install each unit.

These panels consist of an aluminium profile, where the stone tiles are directly assembled, making the facade application process much easier. Each panel weighs between 200kg and 700kg and has dimensions of 3 meters in height and can vary in width between 80 cm and 1.30 m, depending on the wished application.

In total, 1600 panels were produced to cover the entire building, daily around 40 panels were applied to the building's façade. This is a record time that LSI Stone was able to provide alongside Focchi.





Moleanos limestone is characterized by presenting different variations adapted to all tastes and environments. This type of stone is known for easily adapting to any environment in architectural terms, its aesthetical adaptability is easily referenced when starting a large dimension project. In this type, this beige limestone with a compact appearance integrates an alignment of grains and fossils of small dimensions, it is recommended for interior or exterior cladding as well as interior flooring.

CHELSEA



BARRACKS



Chelsea Barracks

Designed in 1862 to house army infantry battalions, Chelsea barracks served as home to many combatants until the year 2008. Following its proposed purchase in 2005, the Secretary of State for Defence at the time decided it would be a great opportunity to breathe new life into that part of the city situated in Westminster.

Qatari Diar appointed Multiplex as the main contractor for Phase IV and it appointed LSI Stone so it could supply the stone in optimum condition and quality. With the first three phases having been successfully completed, phase four had to include something different in its architectural component.



Phase IV consists of three buildings with 97 flats, as well as a state-of-the-art spa, tennis courts, a wellness centre and two garden squares. Five Fields Square, the largest of the seven garden squares, and a second which will be exclusive to the residents of the three buildings.

The beauty of this remarkable architectural masterpiece in Belgravia is in its modern design and retains the original identity of London's prestigious Belgravia area.

The Chelsea Barracks development cost £3 billion to build and was the most sustainable development in Europe in 2021. One of only 16 developments in the world to achieve LEED platinum certification for green building.



Production

There is a first-hand choice of blocks. This is when their homogeneity is confirmed as well as their durability in terms of application on site. Analyses are then carried out at the LSI Stone quality control laboratory to confirm the impact resistance of the stone.

A mock-up of how the project might turn out is made, and it is advisable for all architects to see the quality and organisation of the company in terms of work.

Our CNC professionals program everything according to what the customer plans to achieve. Each project will integrate a thoroughness of more than 3 CNC technicians where all the aspects to be taken into account will be discussed.

Effective high technology and our professionals in all areas make sure that perfection is achieved in every successfully completed project.

For everything to be in order, it is necessary to take manual finishing from our professional finishers. Every detail is taken to the millimetre.

BAITUL FUTUH

MOSQUE

Baitul Futuh Mosque is western Europe's biggest mosque complex. The project is the result of a reconstruction that takes place as a result of damage caused by a large fire in 2015, which left the building devastated.

The type of stone used in this project had to match the London architectural style. As Portuguese natural stone bears a striking resemblance to stone once quarried in British territory, the choice for Moca cream medium grain turned out to be the most appropriate.

This type of stone was indeed the favourite because it presented movement in every detail, i.e., by presenting a medium grain, contrasting with the aluminium of the building itself, it alludes to the constant movement according to the position of the sunlight.

Thus, this architectural genre ends up being innovative and appealing to new cultural perspectives.

Directly from the Foot of the quarry next to the Serras de Aire e Candeeiros Natural Park, the Moca Cream limestone is characterized for presenting different variations adapted to all tastes and environments. In this case, this type of beige limestone with a compact appearance, integrates an alignment of medium size brownish grains and fossils, known as veinage. It is preferably recommended for interiors as well as places with some affluence.



ANCIENT MARBLE

*Timeless patterns that have been
with us since ancient times*

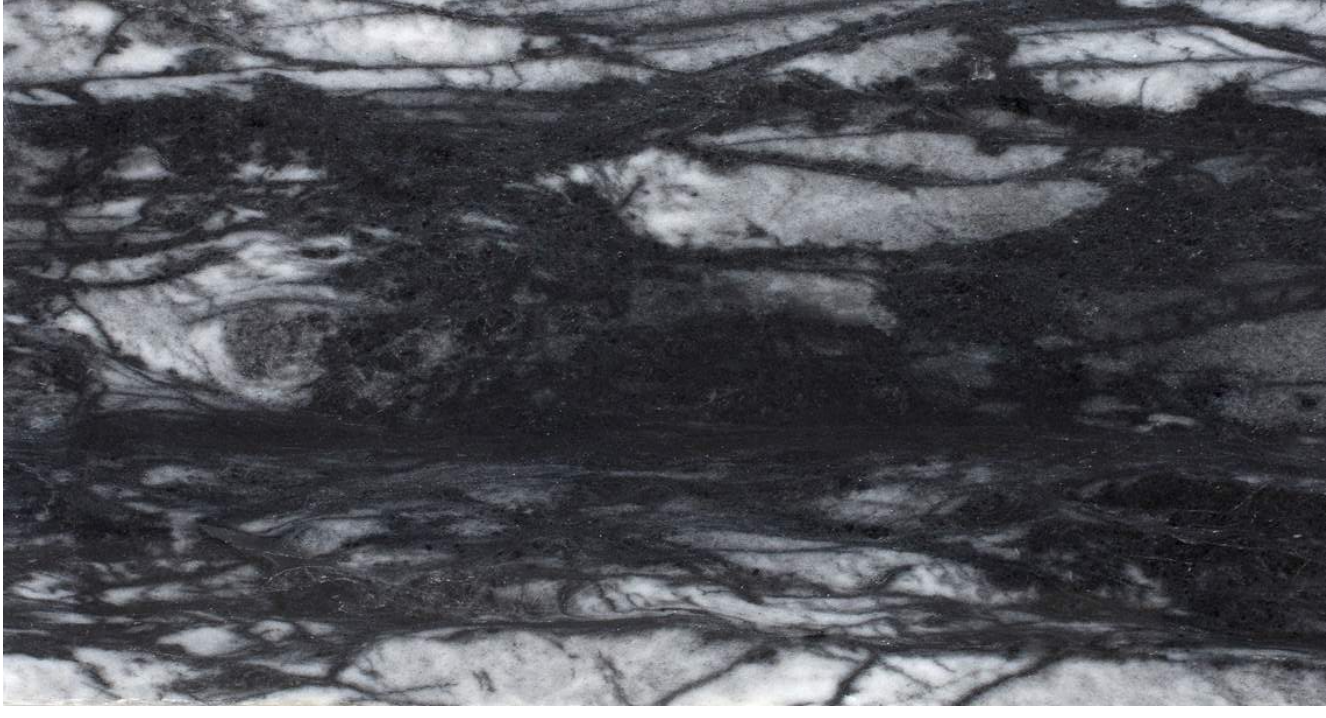
For many years we have been able to see works from ancient Rome with the type of marble we have as a background pattern. At the time we must highlight many others that have the same durability. Marble was undoubtedly the most used type of stone in ancient Rome, works such as Michelangelo's statue of David have been present for centuries in the history of culture and the world.

ESTREMOZ WHITE

"Elegance and Comfort"

Estremoz White is an internationally known marble that has Portuguese origin. Comparable to the Italian marbles, this Portuguese marble presents a premium quality in its use. It presents a white background with brownish veins. This type of marble makes any home look minimalist with personality.





"Classy Black"

Called Black Estremoz by LSI, this marble with a white background and black veins can also have the following connotation: New Ruivina. Being a type of marble extracted in the same area as the Ruivina marble it may be easily confused. However, it should be noted that they have different characteristics depending on the way the blocks are extracted, as well as the specific area of each quarry. This type of marble is regularly used in interior cladding such as flooring. It is a great option for those who appreciate contrast and personality in every detail.

BLACK ESTREMOZ

ESTREMOZ BEIGE

The Estremoz Beige marble presents a relatively homogeneous colour with some brownish and bluish outlined details. This medium grained calcite marble with a cream colour and rosy tones easily combines with any type of work or domestic environment. It is used especially in staircase handrails or wall cladding in bathrooms.



TIMELESS GRANITE

"One of the most durable Stones"



Granite presents a homogeneous pattern and hardly integrates imperfections as fossils or water lines, thanks to its origin in volcanic lava slowly solidified at great depths in the earth's crust. Its magmatic past gives it the durability and resistance that make it timeless.



SILVER GREY

Grey Mix

Silver Grey is a dispersed medium grain granite from the northern region of Portugal (Alto Douro) with a light grey pigmentation with black details, which may include some scattered white touches.

Depending on the area of the city of extraction, the color and density of the pigment may vary. It is suited for uses in interior decoration, coverings, cladding and other stonework.



FAVACO

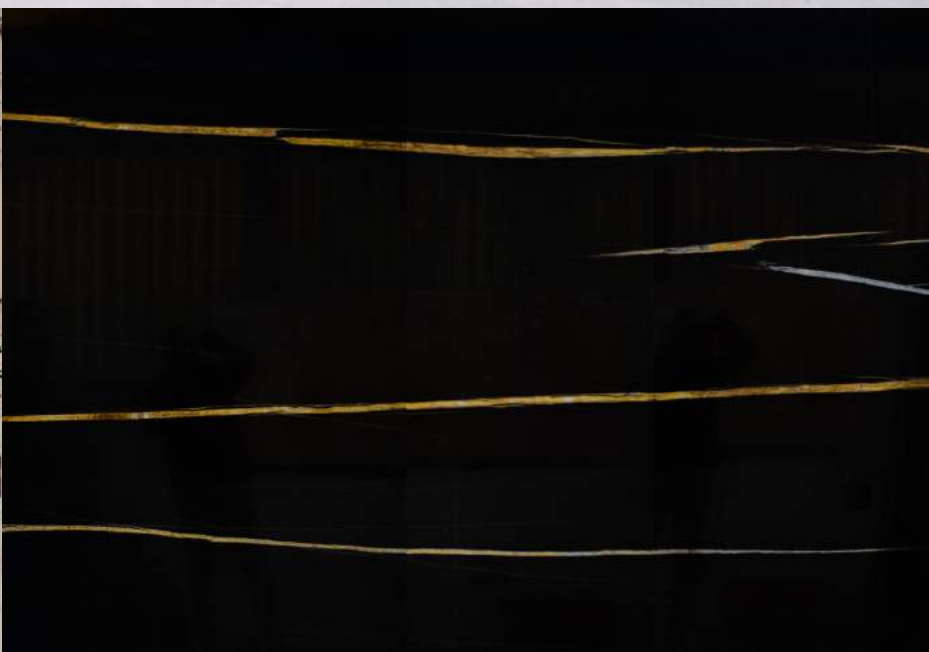


Classy Black

Favaco is a granite with compact grain, from the south region of Portugal (Alentejo). It has a black and dark grey pigmentation and may integrate some disperse white touches.

Depending on the area of the city of extraction, the color and density of the pigment may vary.

It is suited for uses in interior decoration,



EXOTIC STONES

"World Premium Stones"

Bringing the exotic into your home will always be a great combination both in terms of design and architecture. This fantastic collection can be converted into the most varied pieces you most desire. It has a high degree of durability that makes it easy to adapt to any surface. For some years now it has been known that the only natural stones harder than granite are precious ones such as diamonds, rubies and sapphires. Granite itself has signs of crystallized quartz as pure as gems or jewels. The multiple crystalline colors and textures, with geometric and fusion patterns, makes this stone one of the most exotic and exuberant stones you can classify.

ART WITH STONE

Art and Decor

From just one block of stone, various artistic creations can emerge. Let's start with sculpture, the transparency of how a person can be portrayed through a bust or simply half of their body can be conveyed in stone. Sculpting all the features of a person is something really challenging, both for their physical features and their facial expressions. The same thoroughness is taken into account when animals are sculpted, or even monuments.





Needless to say, there are a thousand and one ways to make decorative pieces whether they are for everyday use or not. The furniture in a house doesn't have to be boring! It can contain decorative details to enhance the beauty of the product. Allied to beauty is the detail of the product that LSI Stone can achieve. Innovative and exclusive pieces are part of our standard. LSI Stone can make a dream come true in stone. With quality material and always with a sustainable conscience.

*Bringing
Perfection
together
with
Delicacy*



don't look back by Sagmeister and Walsh

*Transforming
Stone into
our Dream
Art*



Pictorama by Jorge Silva

The importance of the relief of things, plays a key role when it comes to the description of 4D version elements. These are mainly present in works of art with different types of stone, which in the end form a complete image. It is possible to see the qualities of stone that were used, in this one particularly LSI Stone used water jetting to make the perfect finish to the masterpiece.



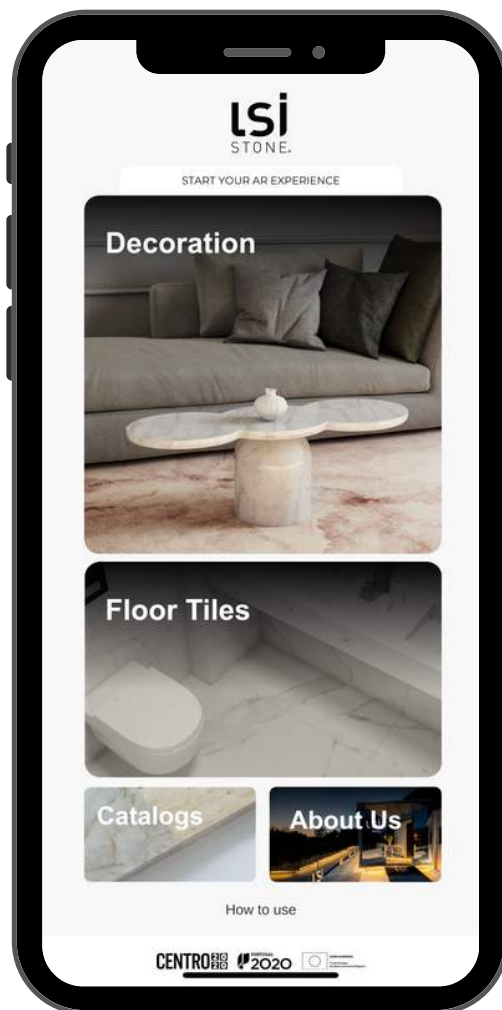


LSI STONE AR APP

*"Constant search for
perfection in objects
before their purchase"*

Allied to the latest technology, as well as highly qualified manpower, LSI starts then on the path of the luxury range for both individual and collective purposes of large dimensions that want to make a difference in your home filling with high-quality luxury.

Never before developed in Portugal, LSI Decor is the app of the moment that brings augmented reality to your favourite place of comfort. You can experience all the luxury and refinement before the big piece is designed or even purchased.



LSI STONE SUSTAINABILITY

Caring for the environment, producing in a sustainable way and sustainable products are critical for Lsi's values and culture.

We respect nature transforming the uniqueness of natural materials nature has to offer and ensuring our environmental footprint is balanced with Nature's well-being.

Our activity and processes are under the quality parameters of ISO 9001 and ISO 14001.

We are also committed to demonstrating our services and products are obtained in an Ethical way, we follow Stone Federation Ethical Stone Register Parameters.





99% of the stone surplus/waste is reused for future industries, through our automatic crushing circulatory system.

97% of all water used comes from our rainwater system and is cyclically reused.

50% of the energy used in the factory is renewable, comes from our solar panels.

STONE MAINTENANCE

General Steps for any kind of Natural Stone Surface:

- Sweep to remove any dirt particles.
- Fill a recipient of warm water and use only water, or mix it with a small amount of neutral liquid "All-Purpose-Cleaner", detergent or cleaning solutions specific for stone. Change the solution when it starts to get dirty.
- Dip a microfiber towel, a duster or a mop into the water mixture and start cleaning.
- Wash the area by starting at the corner of the room and working methodically towards the room exit.
- Allow air circulation in the room for a quick drying.

STONE DO'S AND DON'T'S

What you should Do:

- Do dust mop floors frequently.
- Do protect floor surfaces with non-slip mats or area rugs and countertop surfaces with coasters, trivets, or placemats.
- Do clean surfaces with mild detergent or stone soap.
- Do thoroughly rinse and dry the surface with clean, clear water after washing.
- Do blot up spills immediately.

What you should Not Do:

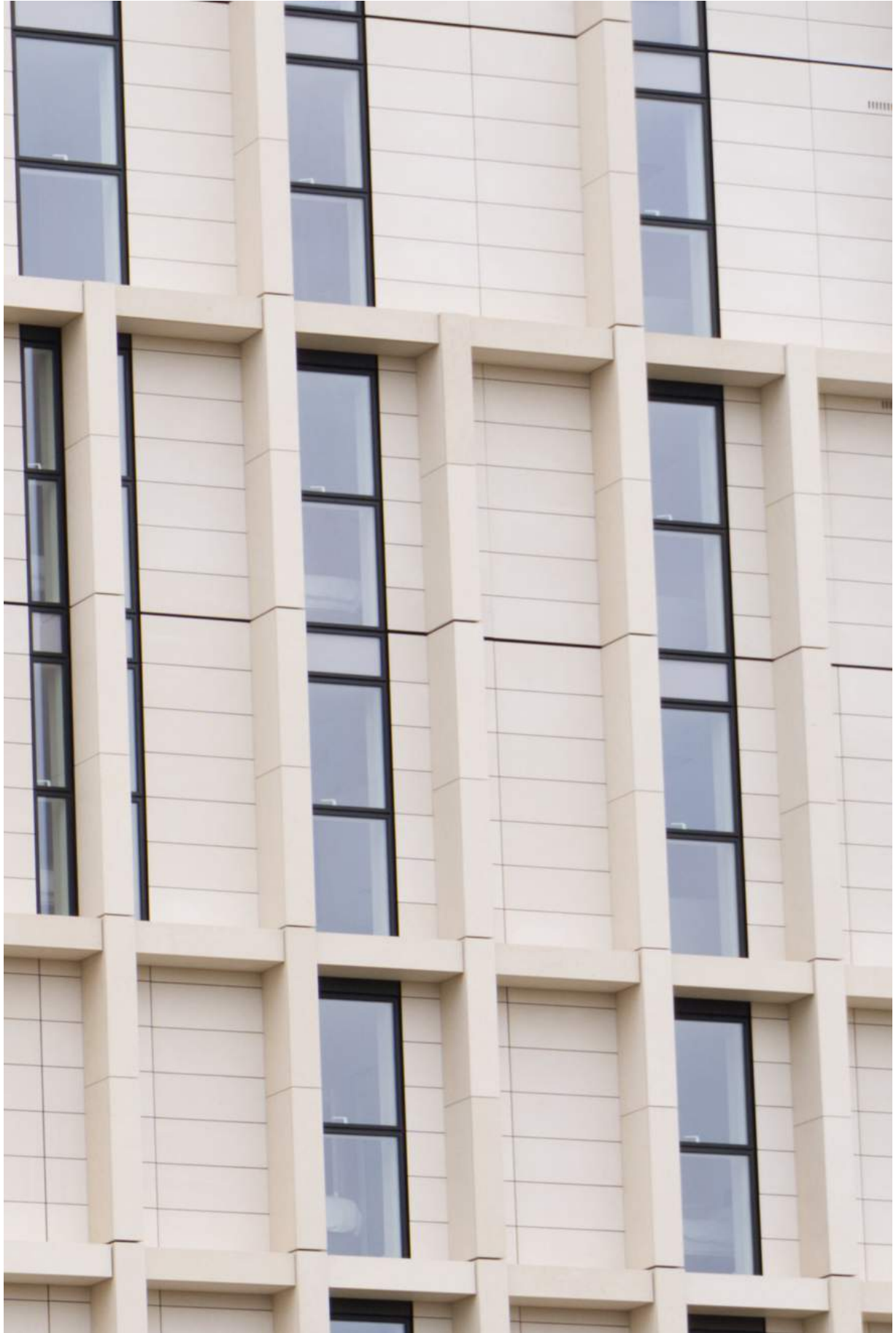
- Don't use vinegar, lemon juice, or other cleaners containing acids on marble, limestone, travertine, or onyx surfaces.
- Don't use cleaners that contain acids such as bathroom cleaners, grout cleaners, or tub & tile cleaners.
- Don't use abrasive cleaners such as dry cleansers or soft cleansers.
- Don't mix bleach and ammonia; this combination creates a toxic and lethal gas.
- Don't ever mix chemicals together unless directions specifically instruct you to do so.
- Don't use vacuum cleaners that are worn. The metal or plastic attachments or the wheels may scratch the stone's surface.



facebook.com/lsi.stone
instagram.com/lsi_stone
linkedin.com/company/lsistone

Contact

info@lsi-stone.com
+351 244 403 673



LSI-STONE.COM